

ESATA-F-BO-V1A

1. Description:

ESATA-F-BO-V1A is a simple ESATA Female socket breakout board. It brings all 8 pins of a ESATA female socket to screw terminal blocks or headers for easy testing, prototyping and breadboard connection. For breadboard connections, user can use the two 4pin headers on both sides of the breakout board to connect to the front end of the breadboard for a steady connection.

2. Features:

- All 8 pins of a ESATA Female Socket brought out to headers or screw terminal blocks
- Securely stay on the PCB with Through Hole type ESATA connector
- Various connecting method chosen by users.
- 2 mounting holes with 2mm diameter hole size
- 0.8"(20.32mm)X1.1"(27.94mm) board dimensions

3. Parts:

- 1) 1pc X ESATA-F-BO-V1A PCB
- 2) 1pc X ESATA Female Socket
- 3) 2pc X 4pin 0.1"(2.54mm) spacing terminal block
- 4) 1pc X 8pin 0.1"(2.54mm) header

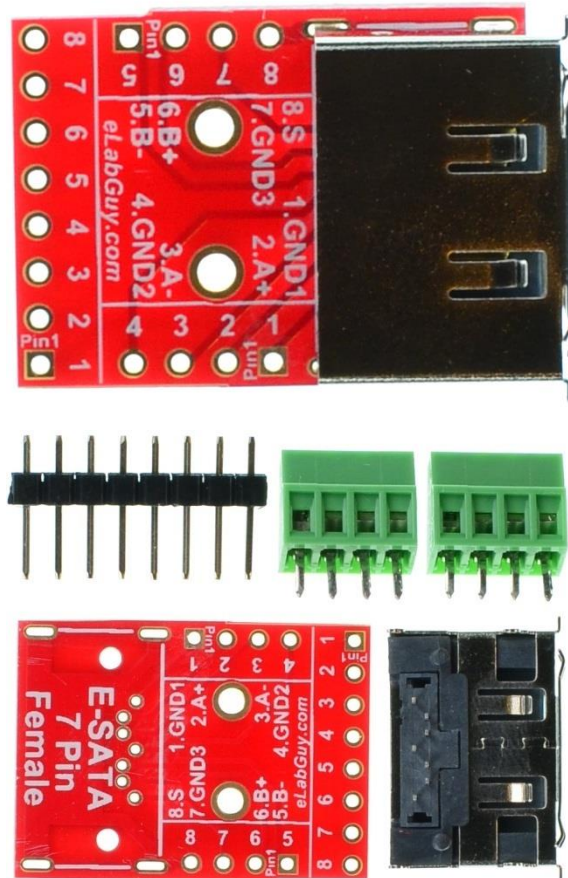


Figure 1: Parts inside the kit
(Note: the module is not assembled, user can decide which connector to use on the module.)

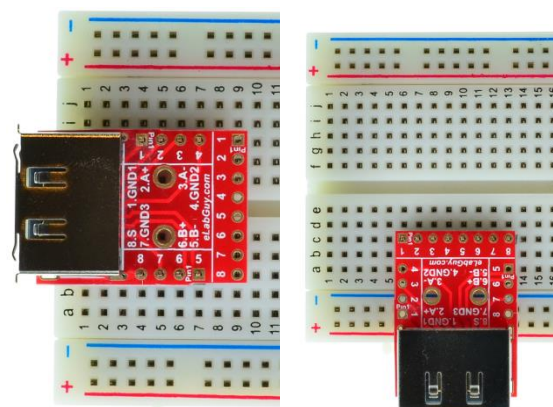


Figure 2: Example of connecting the ESATA-F-BO-V1A on a breadboard

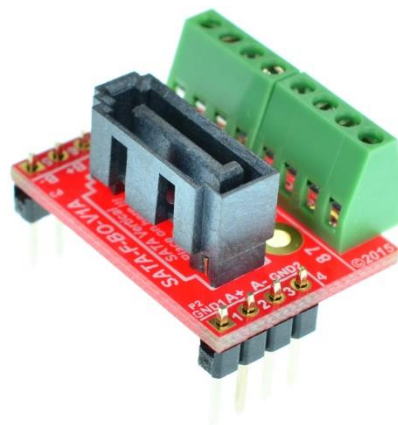


Figure 3: ESATA-F-BO-V1A Various connections

Related products from eLabGuy:



SATA-F-BO-V1A



SATA-F-BO-V1AV